



AiP74AHC244/AHCT244

Octal Buffers/Drivers With 3-State Outputs

Product Specification

Specification Revision History:

Version	Date	Description
2024-06-A0	2024-06	New
2024-09-A1	2024-09	Modify the parameters
2026-01-A2	2026-01	Update the block diagram; add ESD



Contents

1、 General Description.....	1
2、 Block Diagram And Pin Description	3
2.1、 Block Diagram	3
2.2、 Pin Configurations.....	3
2.3、 Pin Description	4
2.4、 Function Table.....	4
3、 Electrical Parameter	5
3.1、 Absolute Maximum Ratings.....	5
3.2、 Recommended Operating Conditions.....	5
3.3、 Electrical Characteristics	6
3.3.1、 DC Characteristics 1	6
3.3.2、 DC Characteristics 2	7
3.3.3、 AC Characteristics 1	8
3.3.4、 AC Characteristics 2	9
4、 Testing Circuit	10
4.1、 AC Testing Circuit	10
4.2、 Test Data	10
4.3、 AC Testing Waveforms.....	11
4.4、 Measurement Points	11
5、 Package Information	12
5.1、 DIP20	12
5.2、 SOP20	13
5.3、 TSSOP20.....	14
6、 Statements And Notes	15
6.1、 The name and content of Hazardous substances or Elements in the product	15
6.2、 Notes	15



1、General Description

The AiP74AHC/AHCT244 is an octal buffer/line driver with 3-state outputs.

Features:

- Supply voltage range:
AiP74AHC244: 2.0V to 5.5V
AiP74AHCT244: 4.5V to 5.5V
- Input levels:
AiP74AHC244: CMOS level
AiP74AHCT244: TTL level
- Temperature range: -40°C to +125°C
- Packaging information: DIP20/SOP20/TSSOP20



Ordering Information:

Tube packing specifications:

Part number	Packaging form	Marking code	Tube quantity	Boxed tube quantity	Boxed quantity	Notes
AiP74AHC244DA20.TB	DIP20	74AHC244	18 PCS/tube	40 tube/box	720 PCS/box	Dimensions of plastic enclosure: 26.3mm×6.4mm Pin spacing: 2.54mm
AiP74AHCT244DA20.TB	DIP20	74AHCT244	18 PCS/tube	40 tube/box	720 PCS/box	Dimensions of plastic enclosure: 26.3mm×6.4mm Pin spacing: 2.54mm

Reel packing specifications:

Part number	Packaging form	Marking code	Reel quantity	Boxed reel quantity	Notes
AiP74AHC244SA20.TR	SOP20	74AHC244	2000PCS/reel	2000PCS/box	Dimensions of plastic enclosure: 12.8mm×7.5mm Pin spacing: 1.27mm
AiP74AHCT244SA20.TR	SOP20	74AHCT244	2000PCS/reel	2000PCS/box	Dimensions of plastic enclosure: 12.8mm×7.5mm Pin spacing: 1.27mm
AiP74AHC244TA20.TR	TSSOP20	74AHC244	4000PCS/reel	8000PCS/box	Dimensions of plastic enclosure: 6.5mm×4.4mm Pin spacing: 0.65mm
AiP74AHCT244TA20.TR	TSSOP20	74AHCT244	4000PCS/reel	8000PCS/box	Dimensions of plastic enclosure: 6.5mm×4.4mm Pin spacing: 0.65mm

Note: If the physical information is inconsistent with the ordering information, please refer to the actual product.



2、Block Diagram And Pin Description

2.1、Block Diagram

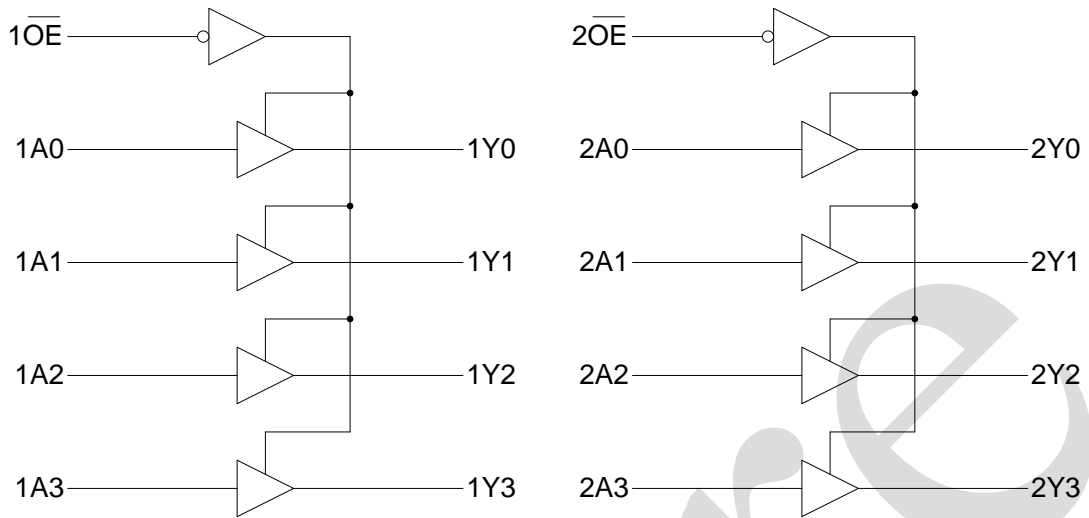
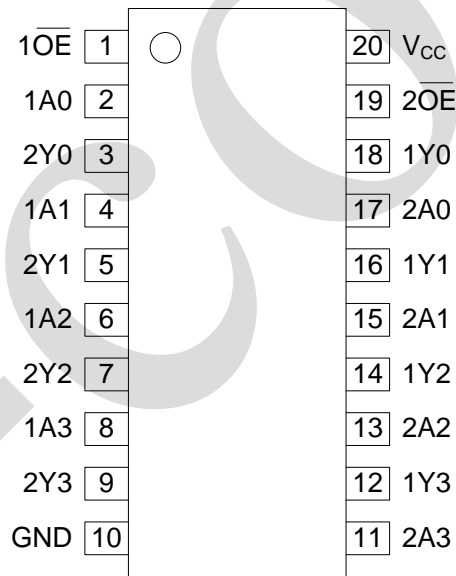


Figure 1. Block Diagram

2.2、Pin Configurations





2.3、Pin Description

Pin No.	Pin Name	Description
1	1OE	output enable input (active LOW)
2	1A0	data input
3	2Y0	bus output
4	1A1	data input
5	2Y1	bus output
6	1A2	data input
7	2Y2	bus output
8	1A3	data input
9	2Y3	bus output
10	GND	ground (0 V)
11	2A3	data input
12	1Y3	bus output
13	2A2	data input
14	1Y2	bus output
15	2A1	data input
16	1Y1	bus output
17	2A0	data input
18	1Y0	bus output
19	2OE	output enable input (active LOW)
20	V _{CC}	supply voltage

2.4、Function Table

Input		Output
nOE	nAn	nYn
L	L	L
L	H	H
H	X	Z

Note: H=HIGH voltage level; L=LOW voltage level; X=don't care.



3、Electrical Parameter

3.1、Absolute Maximum Ratings

(Voltages are referenced to GND (ground=0V), unless otherwise specified.)

Parameter	Symbol	Conditions	Min.	Max.	Unit
supply voltage	V_{CC}	-	-0.5	+7	V
supply current	I_{CC}	-	-	75	mA
ground current	I_{GND}	-	-75	-	mA
input clamping current	I_{IK}	$V_I < -0.5V$	-	± 20	mA
output clamping current	I_{OK}	$V_O < -0.5V$ or $V_O > V_{CC}+0.5V$	-	± 20	mA
output current	I_O	$-0.5V < V_O < V_{CC}+0.5V$	-	± 25	mA
storage temperature	T_{stg}	-	-65	+150	$^{\circ}C$
soldering temperature	T_L	10s	DIP	245	$^{\circ}C$
			SOP/TSSOP	260	
electrostatic discharge	ESD	HBM	4000		V

3.2、Recommended Operating Conditions

Parameter	Symbol	Conditions	Min.	Typ.	Max.	Unit
AiP74AHC244						
supply voltage	V_{CC}	-	2.0	5.0	5.5	V
input voltage	V_I	-	0	-	V_{CC}	V
output voltage	V_O	-	0	-	V_{CC}	V
ambient temperature	T_{amb}	-	-40	-	+125	$^{\circ}C$
AiP74AHCT244						
supply voltage	V_{CC}	-	4.5	5.0	5.5	V
input voltage	V_I	-	0	-	V_{CC}	V
output voltage	V_O	-	0	-	V_{CC}	V
ambient temperature	T_{amb}	-	-40	-	+125	$^{\circ}C$



3.3、Electrical Characteristics

3.3.1、DC Characteristics 1

($T_{amb}=-40^{\circ}\text{C}$ to $+85^{\circ}\text{C}$, voltages are referenced to GND (ground=0V), unless otherwise specified.)

Parameter	Symbol	V _{CC}	Conditions	Min.	Typ.	Max.	Unit
AiP74AHC244							
HIGH-level input voltage	V _{IH}	2.0V	-	1.5	-	-	V
		3.0V	-	2.1	-	-	V
		5.5V	-	3.85	-	-	V
LOW-level input voltage	V _{IL}	2.0V	-	-	-	0.5	V
		3.0V	-	-	-	0.9	V
		5.5V	-	-	-	1.65	V
HIGH-level output voltage	V _{OH}	2.0V	I _O =-50uA	1.9	2.0	-	V
		3.0V	I _O =-50uA	2.9	3.0	-	V
		4.5V	I _O =-50uA	4.4	4.5	-	V
		3.0V	I _O =-4.0mA	2.48	-	-	V
		4.5V	I _O =-8.0mA	3.8	-	-	V
LOW-level output voltage	V _{OL}	2.0V	I _O =50uA	-	0	0.1	V
		3.0V	I _O =50uA	-	0	0.1	V
		4.5V	I _O =50uA	-	0	0.1	V
		3.0V	I _O =4.0mA	-	-	0.44	V
		4.5V	I _O =8.0mA	-	-	0.44	V
input leakage current	I _I	0~5.5V	V _I =5.5V or GND	-	-	±2	uA
OFF-state output current	I _{OZ}	5.5V	V _I =V _{IH} or V _{IL} ; V _O =V _{CC} or GND	-	-	±2	uA
supply current	I _{CC}	5.5V	V _I =V _{CC} or GND; I _O =0A	-	-	2	uA
AiP74AHCT244							
HIGH-level input voltage	V _{IH}	4.5~5.5V	-	2.0	1.6	-	V
LOW-level input voltage	V _{IL}	4.5~5.5V	-	-	1.2	0.8	V
HIGH-level output voltage	V _{OH}	4.5V	I _O =-50uA	4.4	4.5	-	V
			I _O =-8.0mA	3.8	-	-	V
LOW-level output voltage	V _{OL}	4.5V	I _O =50uA	-	-	0.1	V
			I _O =8.0mA	-	-	0.44	V
input leakage current	I _I	0~5.5V	V _I =V _{CC} or GND	-	-	±2	uA
OFF-state output current	I _{OZ}	5.5V	V _I =V _{IH} or V _{IL} ; V _O =V _{CC} or GND	-	-	±2	uA
supply current	I _{CC}	5.5V	V _I =V _{CC} or GND; I _O =0A	-	-	2	uA
additional supply current	ΔI _{CC}	4.5~5.5V	One input at 3.4V; Other inputs at V _{CC} or GND; I _O =0A	-	-	1.5	mA



3.3.2、DC Characteristics 2

($T_{amb}=-40^{\circ}\text{C}$ to $+125^{\circ}\text{C}$, voltages are referenced to GND (ground=0V), unless otherwise specified.)

Parameter	Symbol	V _{CC}	Conditions	Min.	Typ.	Max.	Unit
AiP74AHC244							
HIGH-level input voltage	V _{IH}	2.0V	-	1.5	-	-	V
		3.0V	-	2.1	-	-	V
		5.5V	-	3.85	-	-	V
LOW-level input voltage	V _{IL}	2.0V	-	-	-	0.5	V
		3.0V	-	-	-	0.9	V
		5.5V	-	-	-	1.65	V
HIGH-level output voltage	V _{OH}	2.0V	I _O =-50uA	1.9	-	-	V
		3.0V	I _O =-50uA	2.9	-	-	V
		4.5V	I _O =-50uA	4.4	-	-	V
		3.0V	I _O =-4.0mA	2.48	-	-	V
		4.5V	I _O =-8.0mA	3.8	-	-	V
LOW-level output voltage	V _{OL}	2.0V	I _O =50uA	-	-	0.1	V
		3.0V	I _O =50uA	-	-	0.1	V
		4.5V	I _O =50uA	-	-	0.1	V
		3.0V	I _O =4.0mA	-	-	0.44	V
		4.5V	I _O =8.0mA	-	-	0.44	V
input leakage current	I _I	0~5.5V	V _I =5.5V or GND	-	-	±4	uA
OFF-state output current	I _{OZ}	5.5V	V _I =V _{IH} or V _{IL} ; V _O =V _{CC} or GND	-	-	±4	uA
supply current	I _{CC}	5.5V	V _I =V _{CC} or GND;I _O =0A	-	-	4	uA
AiP74AHCT244							
HIGH-level input voltage	V _{IH}	4.5~5.5V	-	2.0	-	-	V
LOW-level input voltage	V _{IL}	4.5~5.5V	-	-	-	0.8	V
HIGH-level output voltage	V _{OH}	4.5V	I _O =-50uA	4.4	-	-	V
			I _O =-8.0mA	3.8	-	-	V
LOW-level output voltage	V _{OL}	4.5V	I _O =50uA	-	-	0.1	V
			I _O =8.0mA	-	-	0.44	V
input leakage current	I _I	0~5.5V	V _I =V _{CC} or GND	-	-	±4	uA
OFF-state output current	I _{OZ}	5.5V	V _I =V _{IH} or V _{IL} ; V _O =V _{CC} or GND	-	-	±4	uA
supply current	I _{CC}	5.5V	V _I =V _{CC} or GND;I _O =0A	-	-	4	uA
additional supply current	ΔI _{CC}	4.5~5.5V	One input at 3.4V; Other inputs at V _{CC} or GND; I _O =0A	-	-	1.5	mA



3.3.3、AC Characteristics 1

(T_{amb}=-40°C to +85°C, voltages are referenced to GND (ground=0V), unless otherwise specified.)

Parameter	Symbol	V _{CC}	Conditions	Min.	Typ.	Max.	Unit	
AiP74AHC244								
nAn to nYn propagation delay	t _{PLH} , t _{PHL}	3.0~3.6V	C _L =15pF	see Figure 3	-	5.0	10.0	ns
			C _L =50pF		-	7.0	13.5	ns
		4.5~4.5V	C _L =15pF		-	3.4	6.5	ns
			C _L =50pF		-	5.0	8.5	ns
nOE _̄ to nYn enable time	t _{en}	3.0~3.6V	C _L =15pF	see Figure 4	-	6.5	12.5	ns
			C _L =50pF		-	7.5	16.0	ns
		4.5~4.5V	C _L =15pF		-	4.0	8.5	ns
			C _L =50pF		-	5.5	10.5	ns
nOE _̄ to nYn disable time	t _{dis}	3.0~3.6V	C _L =15pF	see Figure 4	-	5.5	11.0	ns
			C _L =50pF		-	10.0	16.0	ns
		4.5~4.5V	C _L =15pF		-	4.8	8.5	ns
			C _L =50pF		-	7.0	10.5	ns
AiP74AHCT244								
nAn to nYn propagation delay	t _{PLH} , t _{PHL}	4.5~4.5V	C _L =15pF	see Figure 3	-	3.5	9.5	ns
			C _L =50pF		-	5.0	9.5	ns
nOE _̄ to nYn enable time	t _{en}	4.5~4.5V	C _L =15pF	see Figure 4	-	3.5	12.0	ns
			C _L =50pF		-	5.5	13.0	ns
nOE _̄ to nYn disable time	t _{dis}	4.5~4.5V	C _L =50pF	see Figure 4	-	5.0	10.0	ns
			C _L =15pF		-	7.0	13.0	ns



3.3.4、AC Characteristics 2

($T_{amb} = -40^{\circ}C$ to $+125^{\circ}C$, voltages are referenced to GND (ground=0V), unless otherwise specified.)

Parameter	Symbol	V _{CC}	Conditions	Min.	Typ.	Max.	Unit	
AiP74AHC244								
nAn to nYn propagation delay	t _{PLH} , t _{PHL}	3.0~3.6V	C _L =15pF	see Figure 3	-	-	10.5	ns
			C _L =50pF		-	-	15.0	ns
		4.5~4.5V	C _L =15pF		-	-	7.0	ns
			C _L =50pF		-	-	9.5	ns
nOĒ to nYn enable time	ten	3.0~3.6V	C _L =15pF	see Figure 4	-	-	13.5	ns
			C _L =50pF		-	-	18.0	ns
		4.5~4.5V	C _L =15pF		-	-	9.5	ns
			C _L =50pF		-	-	12.0	ns
nOĒ to nYn disable time	tdis	3.0~3.6V	C _L =15pF	see Figure 4	-	-	12.5	ns
			C _L =50pF		-	-	17.5	ns
		4.5~4.5V	C _L =15pF		-	-	9.0	ns
			C _L =50pF		-	-	11.5	ns
AiP74AHCT244								
nAn to nYn propagation delay	t _{PLH} , t _{PHL}	5.5V	C _L =15pF	see Figure 3	-	-	9.5	ns
			C _L =50pF		-	-	10.5	ns
nOĒ to nYn enable time	ten	5.5V	C _L =15pF	see Figure 4	-	-	13.0	ns
			C _L =50pF		-	-	14.5	ns
nOĒ to nYn disable time	tdis	5.5V	C _L =50pF	see Figure 4	-	-	12.0	ns
			C _L =15pF		-	-	14.5	ns



4、Testing Circuit

4.1、AC Testing Circuit

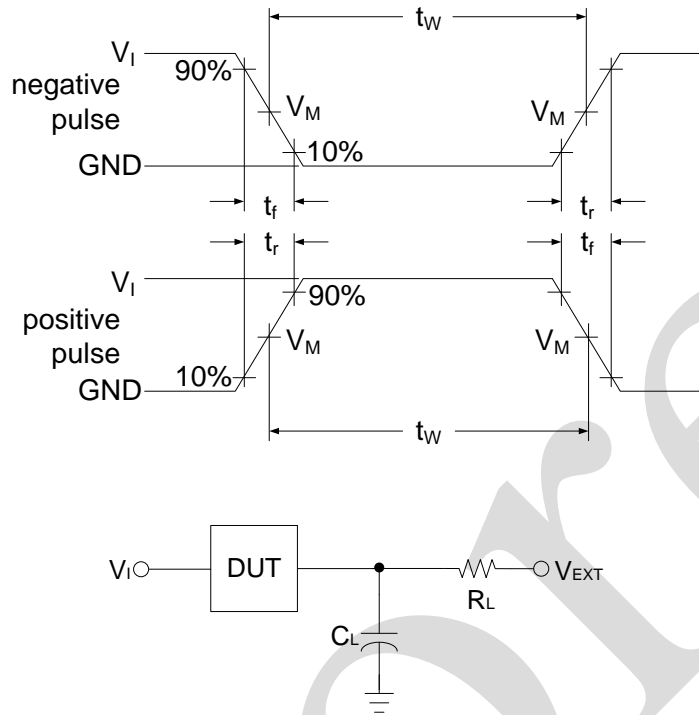


Figure 2. Test circuit for measuring switching times

C_L includes probe and jig capacitance.

4.2、Test Data

Type	Input		Load		V_{EXT}		
	V_I	$t_r = t_f$	C_L	R_L	t_{PLH}/t_{PHL}	t_{PLZ}/t_{PZL}	t_{PHZ}/t_{PZH}
AiP74AHC244	V_{CC}	3.0ns	15pF, 50pF	1K Ω	Open	V_{CC}	GND
AiP74AHCT244	3.0V	3.0ns	15pF, 50pF	1K Ω	Open	V_{CC}	GND



4.3、AC Testing Waveforms

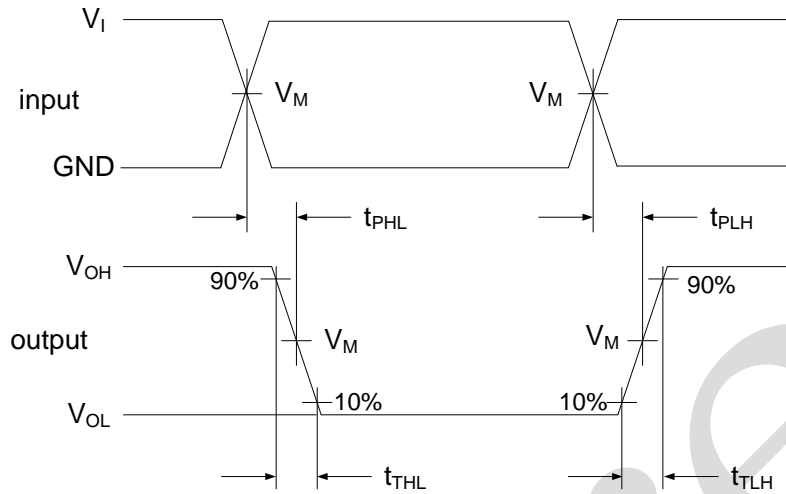


Figure 3. Propagation delay, output transition time

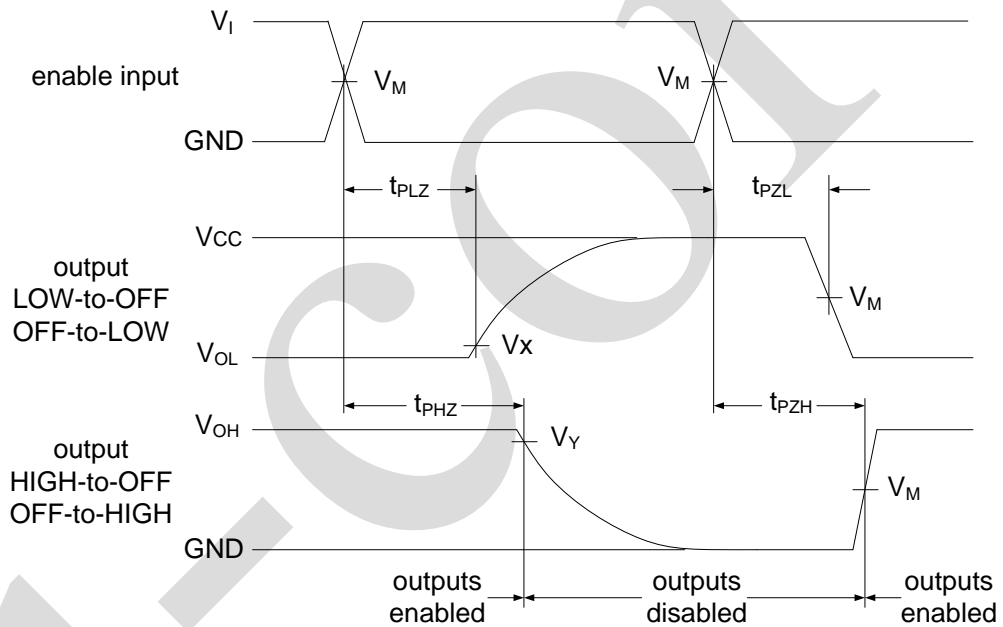


Figure 4. 3-state enable and disable times

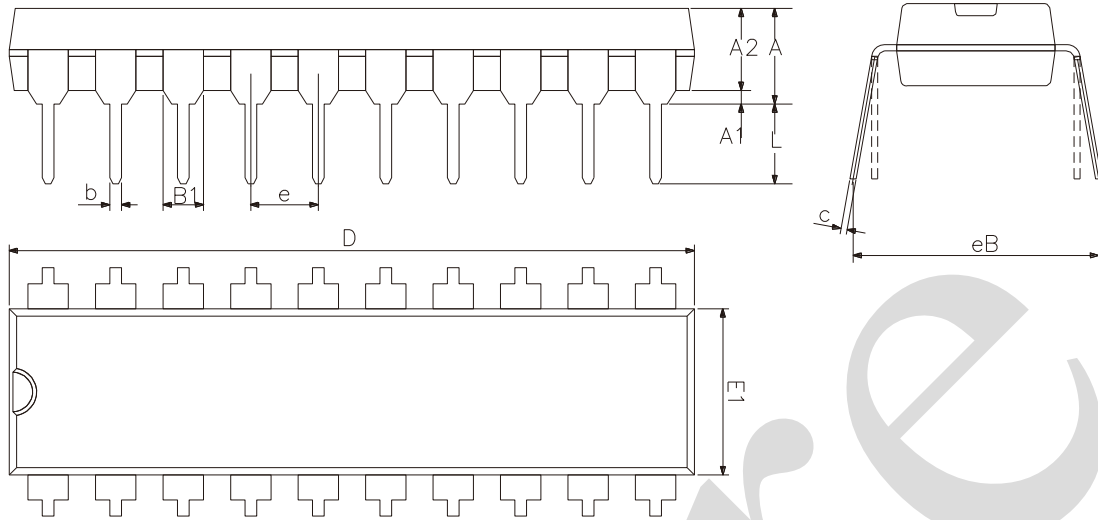
4.4、Measurement Points

Type	Input	Output		
	V_M	V_M	V_X	V_Y
AiP74AHC244	$0.5 \times V_{CC}$	$0.5 \times V_{CC}$	$V_{OL} + 0.3V$	$V_{OH} - 0.3V$
AiP74AHCT244	1.5V	$0.5 \times V_{CC}$	$V_{OL} + 0.3V$	$V_{OH} - 0.3V$



5、Package Information

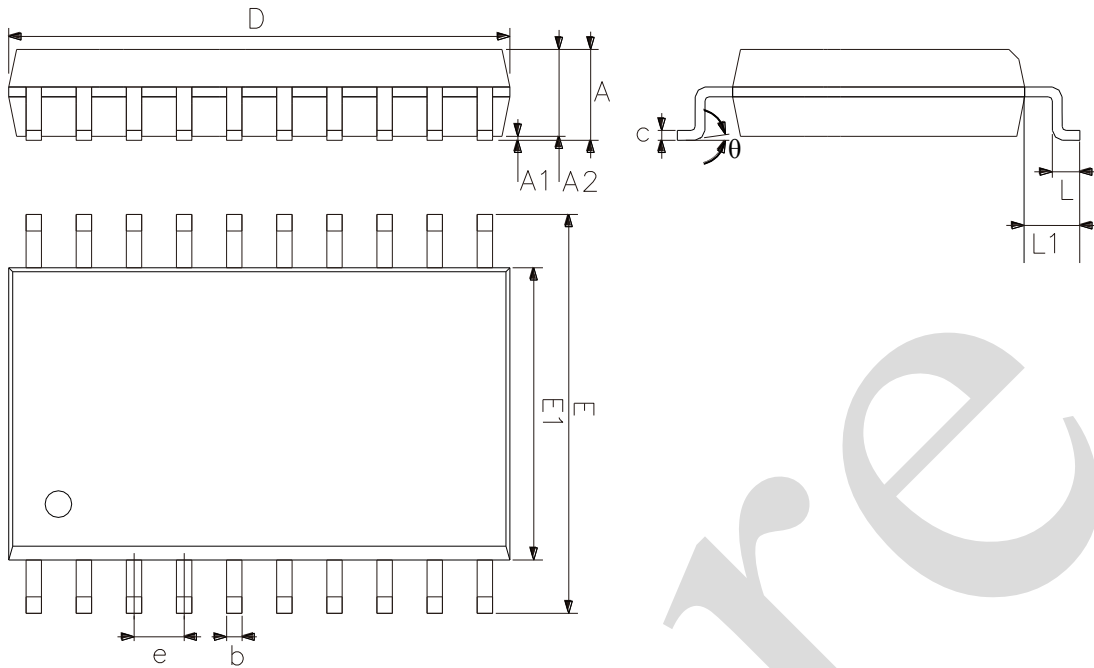
5.1、DIP20



2023/12/A	Dimensions In Millimeters		
	Symbol	Min	Max
	A	3.60	5.33
	A1	0.51	—
	A2	3.20	3.60
	b	0.36	0.53
	B1	1.52	
	c	0.204	0.36
	D	25.70	26.54
	E1	6.20	6.75
	e	2.54	
	eB	7.62	9.30
	L	3.00	3.60



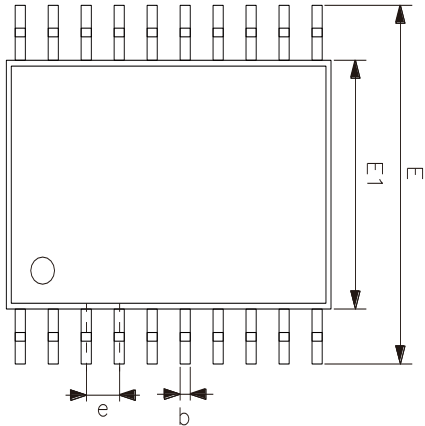
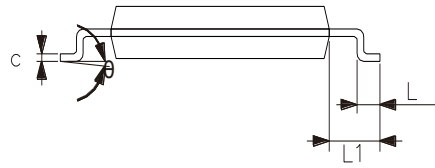
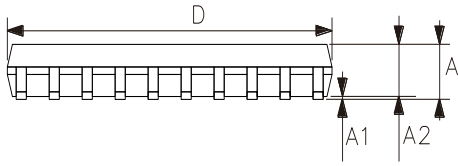
5.2、SOP20



2023/12/A Symbol	Dimensions In Millimeters	
	Min.	Max.
A	2.47	2.65
A1	0.05	0.30
A2	2.20	2.44
b	0.35	0.50
c	0.15	0.30
D	12.54	12.94
E	10.00	10.60
E1	7.30	7.70
e	1.27	
L	0.40	1.05
L1	1.30	1.50
θ	0°	8°



5.3、TSSOP20



2023/12/A	Dimensions In Millimeters	
Symbol	Min	Max
A	—	1.20
A1	0.05	0.15
A2	0.80	1.05
b	0.19	0.30
c	0.09	0.20
D	6.40	6.60
E1	4.30	4.50
E	6.20	6.60
e	0.65	
L	0.45	0.75
L1	1.00	
θ	0°	8°



6、 Statements And Notes

6.1、 The name and content of Hazardous substances or Elements in the product

Part name	Hazardous substances or Elements									
	Lead and lead compounds	Mercury and mercury compounds	Cadmium and cadmium compounds	Hexavalent chromium compounds	Polybrominated biphenyls	Polybrominated biphenyl ethers	Dibutyl phthalate	Butylbenzyl phthalate	Di-2-ethylhexyl phthalate	Diisobutyl phthalate
Lead frame	○	○	○	○	○	○	○	○	○	○
Plastic resin	○	○	○	○	○	○	○	○	○	○
Chip	○	○	○	○	○	○	○	○	○	○
The lead	○	○	○	○	○	○	○	○	○	○
Plastic sheet installed	○	○	○	○	○	○	○	○	○	○
explanation	○: Indicates that the content of hazardous substances or elements in the detection limit of the following the SJ/T11363-2006 standard. ×: Indicates that the content of hazardous substances or elements exceeding the SJ/T11363-2006 Standard limit requirements.									

6.2、 Notes

We recommend you to read this chapter carefully before using this product.

The information in this chapter is provided for reference only and i-Core disclaims any express or implied warranties, including but not limited to applicability, special application or non-infringement of third party rights.

This product is not suitable for critical equipment such as life-saving, life-sustaining or safety equipment. It is also not suitable for applications that may result in personal injury, death, or serious property or environmental damage due to product malfunction or failure. I-Core will not be liable for any damages incurred by the customers at their own risk for such applications.

The customer is responsible for conducting all necessary tests i-Core's application to avoid failure in the application or the application of the customer's third party users. I-Core does not accept any liability.

The Company reserves the right to change or improve the information published in this chapter at any time. The information in this chapter are subject to change without notice. We recommend the customer to consult our sales staff before purchasing.

Please obtain related materials form i-Core's regular channels and we are not responsible for its content if it is provided by sources other than our company.

In case of any conflict between the Chinese and English version, the version is subject to the Chinese one.